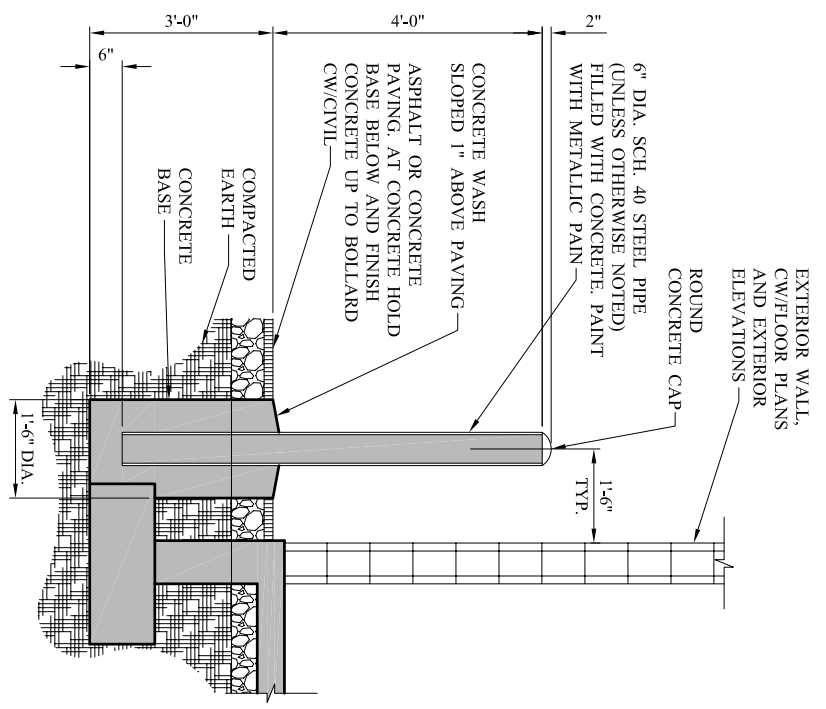


4" DIA. PIPE BOLLARD WITH CHAIN
NOT TO SCALE

- NOTES:**
1. ALL METAL COMPONENTS ARE TO BE GALVANIZED.
 2. VERIFY LOCATIONS OF UNDERGROUND UTILITIES BEFORE DIGGING CONCRETE FOUNDATION.
 3. BOLLARDS ARE TYPICALLY SPACED 15' TO 18' APART.
 4. ATTACH CHAIN TO BOLLARD AS FOLLOWS: WELD A U-BOLT (WITH THREADS CUT OFF) WITH TOP OF BOLT 2" FROM TOP OF BOLLARD. SPOT WELD ONE SIDE ONLY. ATTACH CHAIN LINK TO THE BOLT IN THE FIELD AND FIELD WELD THE OTHER SIDE REGALVANIZED IN THE FIELD.
 5. PROVIDE REMOVABLE BOLLARD SLEEVES AND SLEEVE CAPS OF DRIVEWAY LOCATIONS WHERE BOLLARD WHERE SPACING WILL EXCEED 15' TO 18" TYPICALLY.
 6. ALL PARKING SPACES, BOLLARDS ARE TO BE PLACED 3' TO FRONT OF CURB UNLESS OTHERWISE NOTED. COORDINATE IN FIELD WITH ADJOINING LANDSCAPE SIGNS.

PIPE BOLLARD WITH CHAIN
NOT TO SCALE



6" DIA. PIPE BOLLARD
NOT TO SCALE