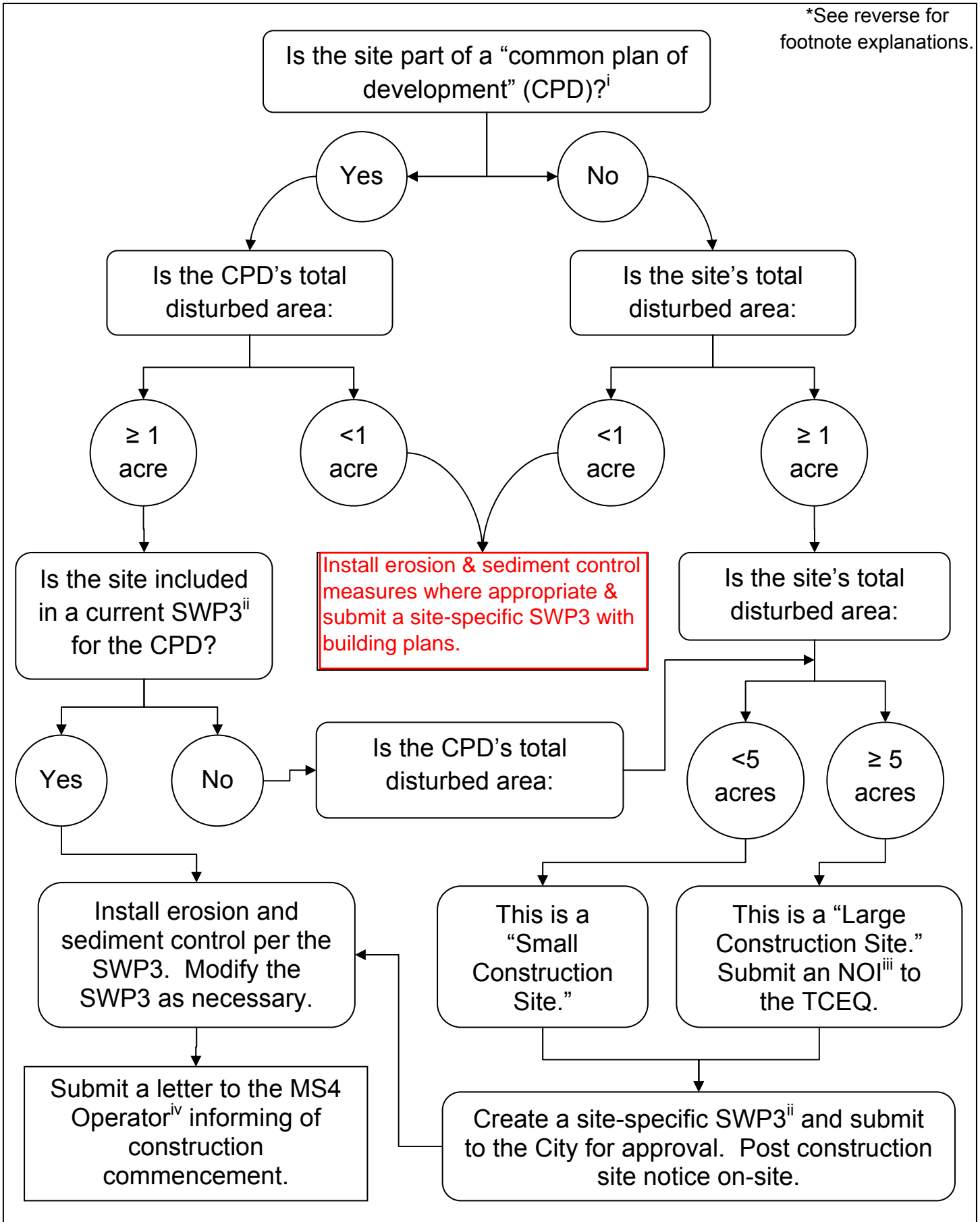


STORMWATER QUALITY REQUIREMENTS FOR CONSTRUCTION SITES

*See reverse for footnote explanations.



Notes:

ⁱ – Common Plan of Development (CPD): A construction activity is part of a larger common plan of development if it is completed in separate stages, in separate phases, or in combination with other construction activities. It can include one operator or many operators. It is identified by the documentation that identifies the scope of the project including such things as the following:

- plats
- blueprints
- marketing plans
- contracts
- building permits
- public notice or hearing
- zoning requests

Example: A subdivision is being built. You are grading 0.75 acres, another company is clearing 4 different acres, and a contractor is excavating another 0.5 acres. In this case, the total area that would be disturbed is 5.25 acres, so *each operator* would fall under the requirements associated with disturbing 5 or more acres.

FMI: http://www.tceq.texas.gov/permitting/stormwater/common_plan_of_development_steps.html

ⁱⁱ – Stormwater Pollution Prevention Plan (SWP3): An SWP3 (or SWPPP) is a document that details Best Management Practices (BMPs) for a construction site. It documents the activities and timelines of construction of the project that may have an impact on stormwater runoff quality. A SWP3 also describes and locates physical stormwater controls, such as filter fabric fences, inlet protection, erosion control logs, rock berms, etc., that are to be constructed on or near the site to protect stormwater quality. BMPs noted in the SWP3 must be installed before land is disturbed and maintained throughout the project. Part III of the Construction General Permit explains in detail what is required:

http://www.tceq.texas.gov/assets/public/permitting/stormwater/TXR150000_CGP.pdf

ⁱⁱⁱ – Notice of Intent (NOI): This form is required to be submitted for large construction activities which disturb five or more acres of land, including those activities which are part of a larger common plan of development that disturb five or more acres of land. Once an NOI is on file with the TCEQ, a construction site operator may also need to file a Notice of Change (NOC) or Notice of Termination (NOT) when construction activities change from original plans or are completed. Those forms and other helpful information may be found here:

http://www.tceq.texas.gov/permitting/stormwater/WQ_stormwater_construction_guidance.html

^{iv} – Municipal Separate Storm Sewer System (MS4) Operator: MS4s are stormwater systems that are governed and maintained by public or private entities. The City of San Angelo has an MS4, and the operator is the Stormwater Engineer. When Notices of Intent are required by a construction project, the operator of the MS4 into which construction site runoff flows shall be notified. Other MS4s in the San Angelo area include Tom Green County, Goodfellow Air Force Base, Angelo State University, and the Texas Department of Transportation. MS4s are regulated by and must be permitted through the TCEQ to discharge stormwater runoff.